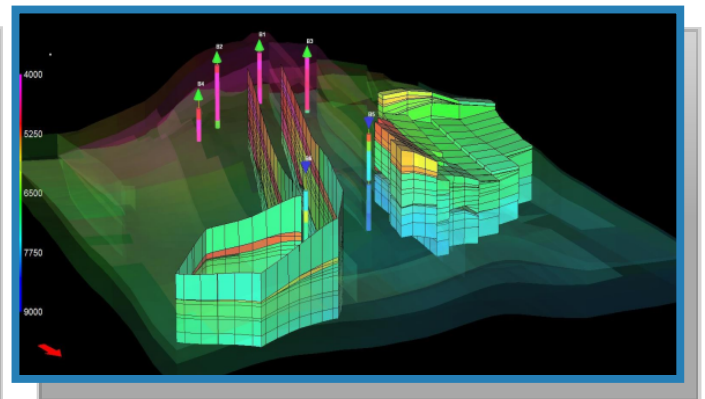
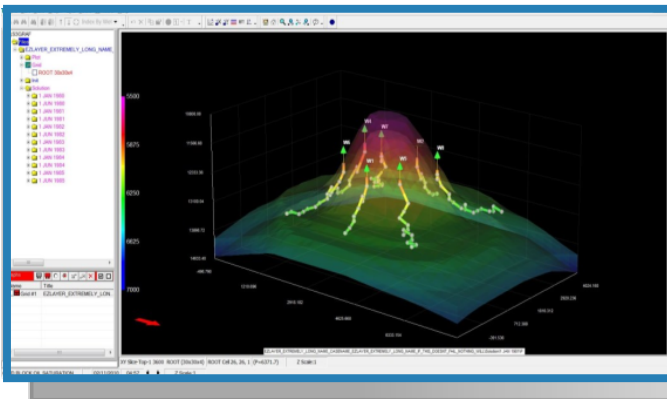
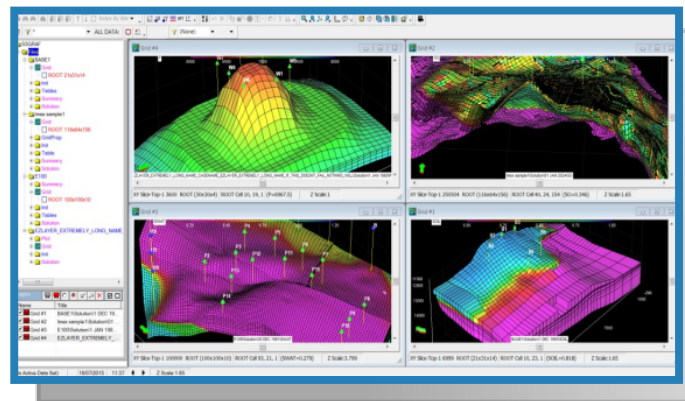


# S3GRAF-3D

*3D at the touch of a button*



- *Advanced 3D visualisation*
- *Multiple grids on screen for faster analysis*
- *User-definable properties (derived quantities) on grid regions*
- *Extensive range of 3D functionality*

## 3D at the touch of a button

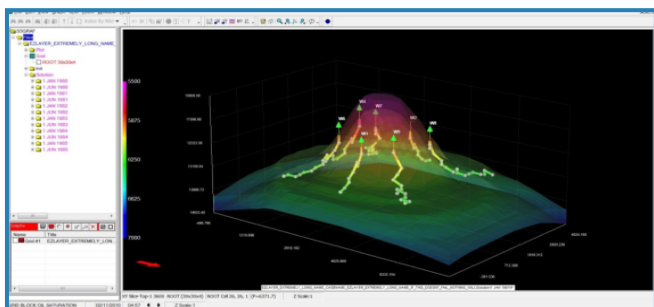
**S3GRAF-3D** is the powerful 3D component of **S3GRAF** which enables 3D visualisation and analysis of reservoir simulation models.

It is both easy-to-use and flexible in that it supports the widest range of simulators in the market including tNavigator, Eclipse, CMG, VIP, Nexus, Streamline (FrontSim and 3DSL) and UTCHEM.

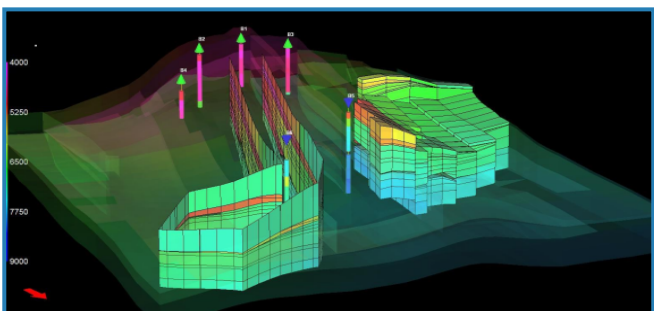
Within **S3GRAF-3D** there are many advanced features and functions, enabling the reservoir engineer to quickly define and focus on regions of interest. Multiple views can be displayed on-screen simultaneously, from multiple simulators, for rapid analysis and decision making.

### BENEFITS

- Advanced 3D visualisation enables faster access to the model
- Multiple grids on-screen for faster analysis
- Enhances productivity
- Multiple simulator support, allowing standardisation
- Fast data loading and plotting
- Calculations capabilities on user-defined grid regions



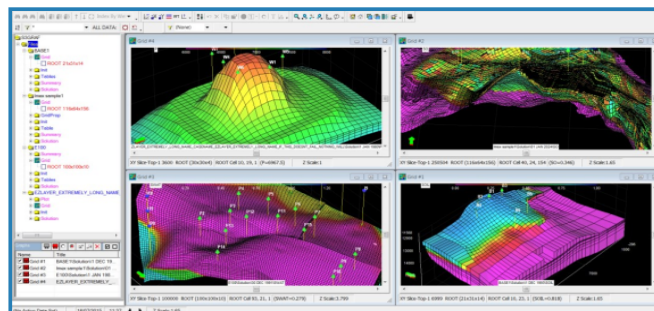
**Well tracks view**



**Polyline and polygon**

### KEY FEATURES

- Multiple simulator support
- Multiple grids on-screen together
- Batch processing via GRF scripts
- Seamless integration with S3GRAF-HPG add-on module
- User-definable regions:
  - Polylines
  - Polygons (Arbitrary, Rectangular, Radial)
  - Thresholds
  - Grid Clips (Fence Plots)
- Volumetric calculations on field and regions
- User-functions on regions including region combinations
- Automatic reporting to MS Office applications
- Wide array of 3D visualisation functionality:
  - Rotate, pan , zoom.
  - View grid properties through time
  - Grid linking with copy and paste options
  - Streamlines
  - Cut Plane
  - Well Tracks
  - Explode view
  - Isosurfaces
- Simple movie recording
- Integration with the workflow manager for 3D analysis in workflows
- Exporting of properties for reintroduction as include files to the simulator model
- Statistics of displayed grid cells



**Multiple linked grids**

